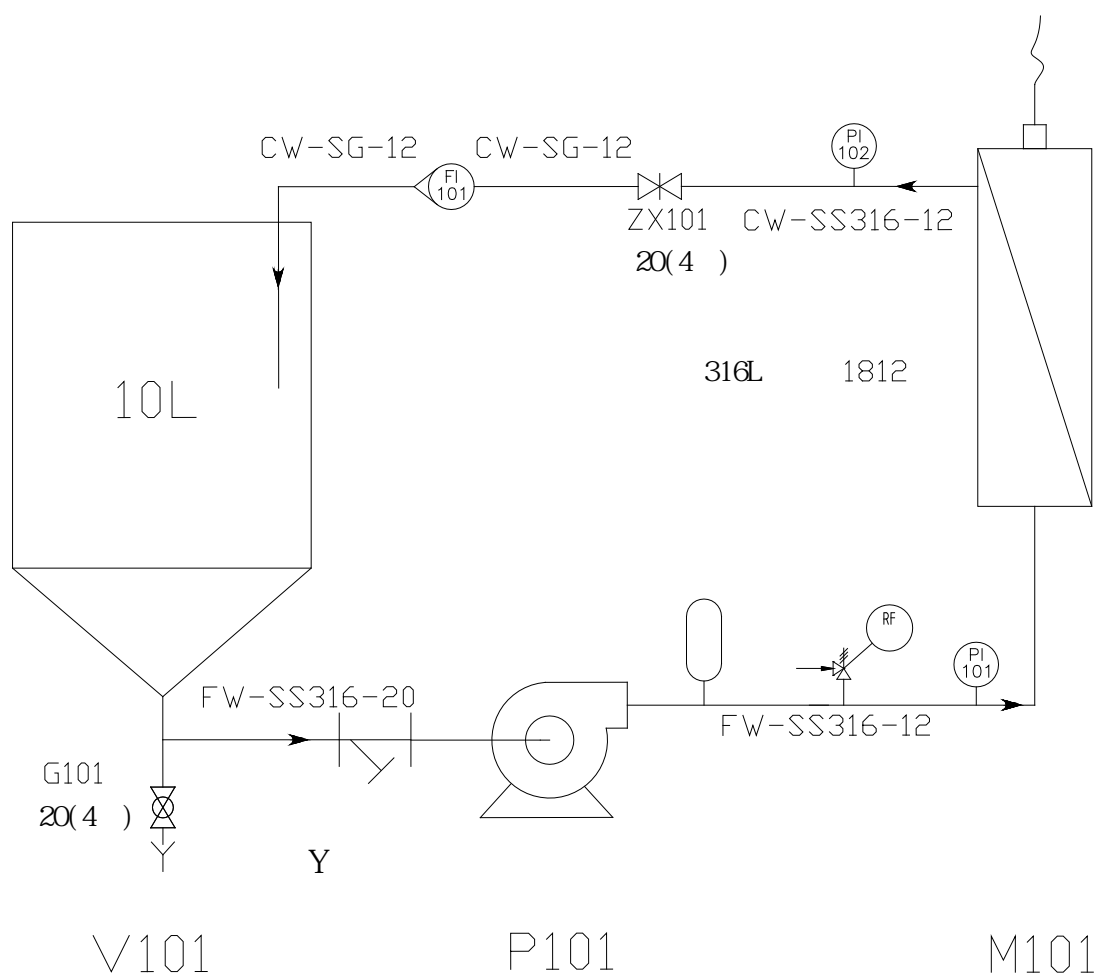




1812	2
2540	5
4040	8
	/	10
	12
	14
DTRO	16
	19
	20
	22

1812

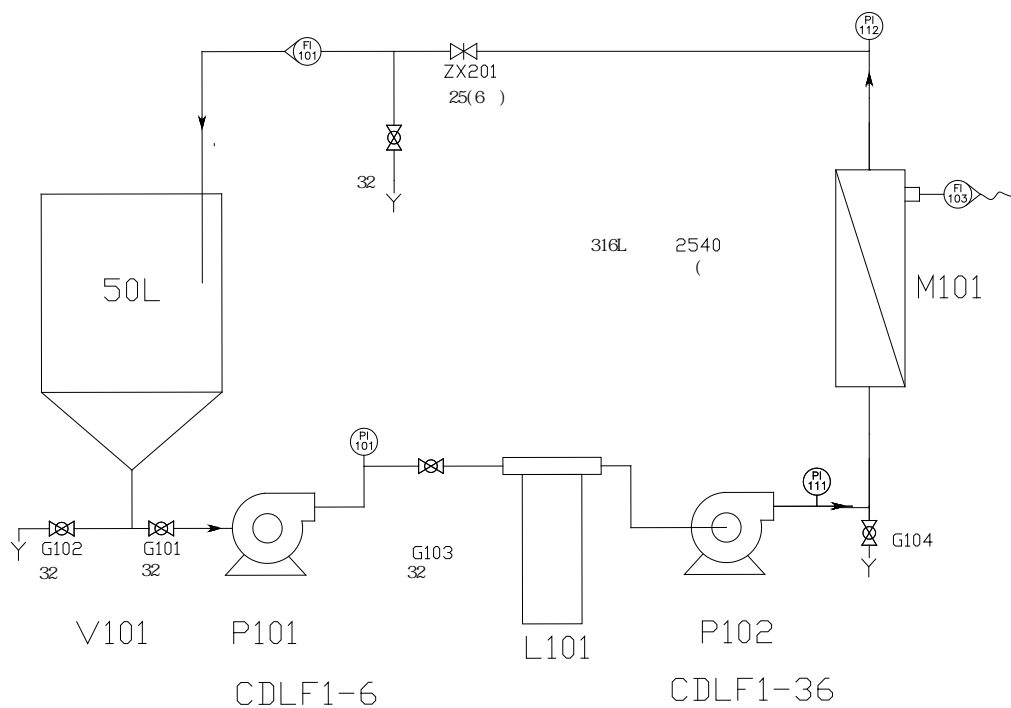
1812		WTM-1812G	WTM-1812D
		1812	1812
		0.4	0.4
		4.0Mpa	0.8Mpa
		5—45	5—45
	PH	1--14	1--14
		1L	1L
		0.5—5L/h	0.5—5L/h
		5—100L	5—100L





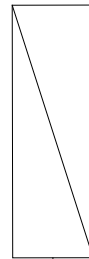
2540

2540		WTM-2540G	WTM-2540D
		2540	2540
		2.5	2.5
		4.0Mpa	1.6 Mpa
		5—45	5—45
	PH	1--14	1--14
		8L	8L
		5—50L/h	5—50L/h
		50—500L	50—500L





4040





/

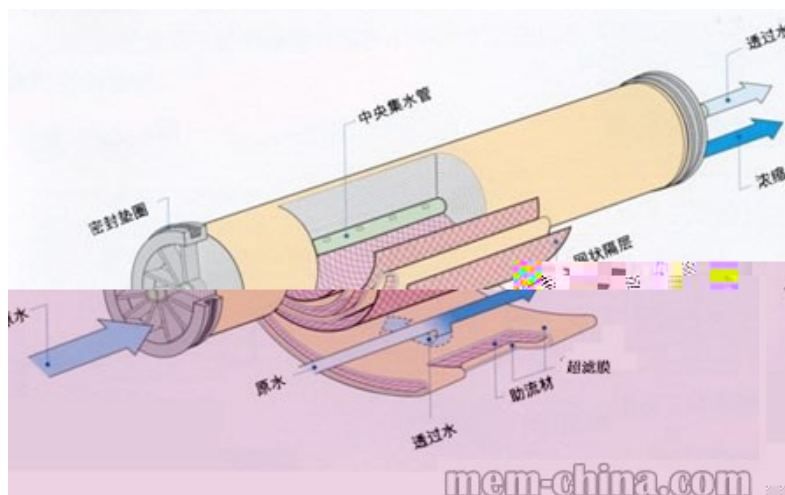
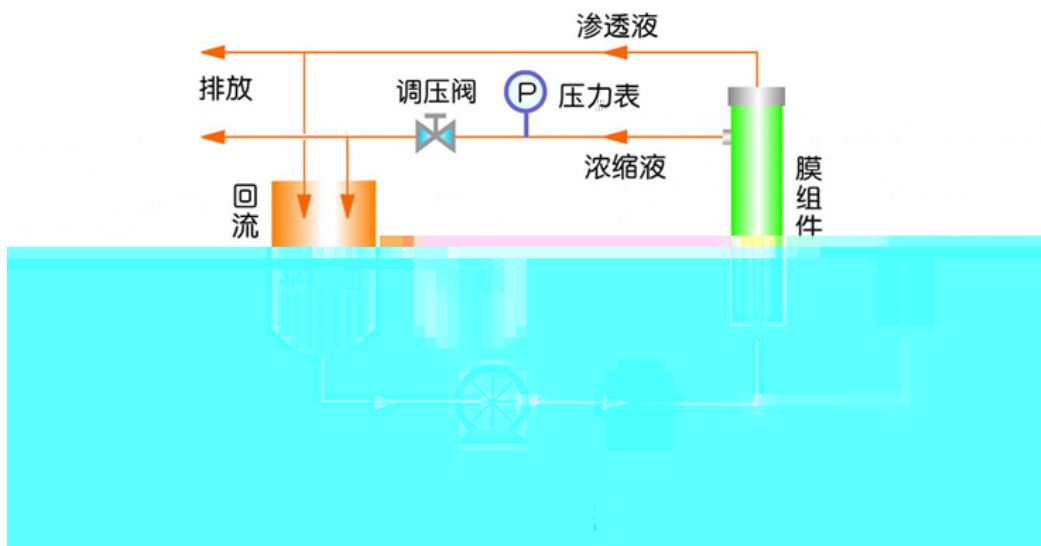
0806G		WTM-0806G
		50mm
		19.6c
		0.8Mpa
		5—55
	PH	1--14
		0.8L
		1—4L/h
		0.2—4L





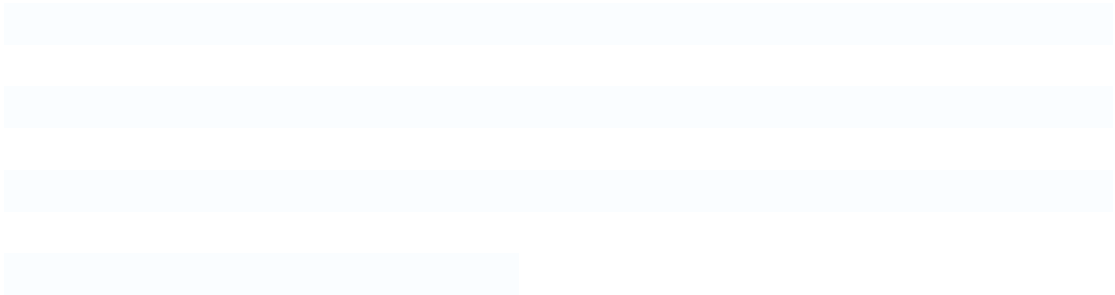
0.05 μ m 1.4 μ m





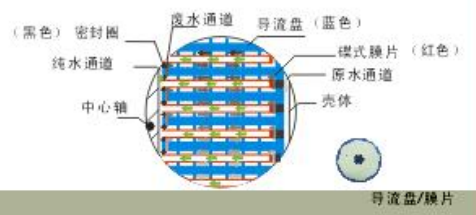


DTRO

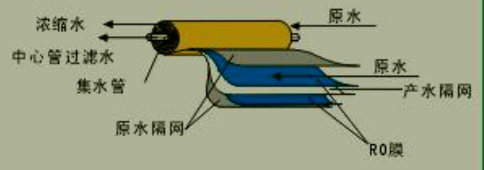


)

二代U₁超级反渗透
源自德国



一代卷式反渗透
源自美国







.....

.....

.....

.....

.....

